

56 Kenyon Plant materials

* sun, partial shade, shade

<u>Name</u>	<u>Heig ht</u>	<u>Spaci ng</u>	<u>Blooms</u>	<u>Color</u>	<u>*s ps sh</u>	<u>Picture</u>
<u>FRONT and DRIVEWAY Side</u>						
<u>Trees:</u>						
Norway Maple (north corner)						
Street tree: English Hedge Maple (30 yrs. old)						
Pyramidal Japanese Yew (So. corner) 25 yrs old						
Ginkgo Tree (So. Side)						
Colorado Blue Spruce (w/ fungus) (So. side)				Evergreen		
Pungens fangus ? X2 + seedlings						
Elm + Silver Maple (So. side)						
Eastern Red Cedar				Evergreen		
<u>Shrubs and Perennials (house side):</u>						
Climb. Rose: 'New Dawn' (on Norway maple)			June	Lt. pink		
Roses – The Fairy				Pink		
Azalea - Fuchsia			Early May	Fuchsia		
Sedum – 'Autumn Joy'			Sept-Oct	Dusty Pink		
English shrub rose 'Gertrude Jaekle' – a favorite			June	pink		
Hemerocallis 'Chicago Royal Robe' daylily	30"		July	Burgundy w/ yellow throat		
Potted Rose Standard: Zepherine Dauphin				fuchsia		
*Dwarf Hinoko False Cypress (20 yrs. Old)				Evergreen		
Chamaecyparis obtuse graculis						
*Shrub rose – Bonica			Jun-July?			
Lilac – double				Grey-purple		
*English rose 'Galbraith'			June ?	Red		
Antique rose 'Souvenir de la Malmaison'				pink		
3 ferns: Japanese Painted, Ostrich, Sensitive						
Perennial Sweet Pea						
Semisefuga – Foam Flower				Pale lilac		
Clematis 'Earnest Markham'			?June	Red-Purple		
<u>Shrubs and Perennials (South side of drive):</u>						
3 mystery peonies (so. Side)			June	Pink-white		
White Hydrangeas, arborescence under Ginkgo			July	white		
Taxis Cuspidata densiformus seedlings						
??Hixii						
Rhododendron PJM 'Olga' (small leafed)	5-6'			Pink		
Tall Ground cover – aster			Sept.	white		
<u>BACK PATIO: (irregular slate w/ moss)</u>						
<u>Trees:</u>						
Chanticleer Flowering Pear (So. Side)	40-	15-				
Pyrus Calleryana 'Chanticleer' (narrow)	60'	20'				
Thunder Cloud Plum (red leaves) (No-East)	25'			Pink		
European Hornbeam Upright	40-	20-	April	Yellow		
Carpinus betulus festigiata (No-West)	60'	30'				

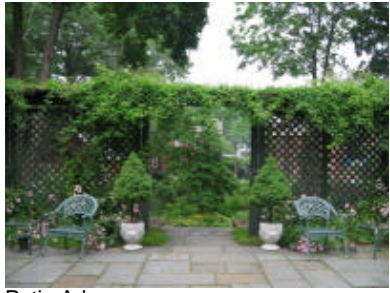
<u>Shrubs and Perennials (Arbor side):</u>							
Decorative pots: 2 Dwarf Alberta Spruce (20 yrs)						Evergreen	
Rosa – ‘The Fairy’			Jun-July?			Pink	
Clematis on arbor: ‘Sweet Autumn’			Sept?			White	
<u>Shrubs and Perennials (Garage & House side):</u>							
Trumpet Vine up fire escape							
Lilac ‘Charles Jolie’							
Clematis ?mystery							
Hosta – (huge round leaf) ‘Sum and Substance’						Chartreuse	
Grass ?‘Hakanuha aloha’ – variegated var.						Green-ivory	
Coral Bells ‘Plum Pudding’						Purplish leaf	
Many fine Bonsai							
<u>Shrubs and Perennials (No. side):</u>							
2 Boxwood sempervirans - common						Evergreen	
2 Rose of Sharon – pruned next to fence							
Hostas (from the East):							
Patriot (green w/ white edge)							
Great Expectations (yellow w/ green splotch)							
Golden Tiara (green w/ chartreuse edge)							
Gold Standard (very chartreuse w/ green edge)							
Stiletta (tiny green)							
Common large hosta							
Astilbe ‘Henry Graafland’	12-14”		July			pink	
Weed – Virginia Creeper							
<u>BACK Yard: (retained by 30” irregular brownstone wall – 4 steps down – slate capped brownstone)</u>							
Stone work by Francisco (landscaped John’s yard)							
<u>Trees:</u>							
3 mature Norway Maples – high canopy (No.+Es)							
Redbud (pond island)							
European weeping Beach ‘Purple Fountain’							
Threadleaf Sawara False Cypress (island)							
Kousa Dogwood (So. Side)							
Native Hornbeam (So. Side)							
Western Arborvitae (So-East corner)	40’						
2 Southern Magnolias ‘Edith Brogue’ hardiest							
Weeping White Pine (rear bed toward No.)							
European Larch (rear bed toward No.)							
Umbrella Pine (No. side toward east)							
White Dogwood ‘Cherokee Princess’	30						
Weeping Alaskan Cedar (specimen)							
(Counterclockwise from steps)							
<u>Shrubs and Perennials: Wall bed, So. side steps)</u>							
2 Dwarf Alberta Spruce (25 yrs. Old)							
3 Hydrangea ‘Endless Summer’							
Lilac ?mystery hybrid						Red-purple	
3 rhododendron ‘Scintillation’	5-6’					pink	
Groundcover: Epimedium			Spring			purple	
3 Tiarellas (X with coral bells)							
<u>South fence:</u>							
3 Mountain Laurels – mixed							
Azalea – unique (spider flower form of r.Pukense)						Lt. Lavender	

Hydrangea – ‘Pink Diamond’	3’		July	pink		
Grass ?‘Hakanuha aloha’ – yellow var.				yellow		
<u>Island 1 (Beach)</u>						
3 peonies + 1 Pink Tree Peony - ?mystery						
2 Azaleas ‘Deleware Valley White’				White		
1 Azalea ‘Conversation Piece’	2’	4’	May	Pink&white		
Fernleaf Blackthorn (3’ now) thready leaves						
<u>Island 2 (False Cyprus)</u>						
Astilbe ‘Fanal’				Dk. red		
2 Astilbe ‘Bridal Veil’				White		
hosta						
<u>Rear Fence-line (from So to No.)</u>						
Leather-leaf viburnam	8-10’	8-10’	May	White		
Variegated Red-stemmed Dogwood shrub – pale	6-10’	5-10’	Winter	Red sticks		
Cornus alba ‘Elegantissima’						
Perennial Bachelor’s Button ‘Centuria’						
Japanese Iris (?mystery)						
Perennial Hibiscus ‘Disco Bell’				Huge pink		
4 Winterberry deciduous holly Ilex vertisalata						
<u>North Fence Line (from the East to West)</u>						
Euonymus Burning Bush (fabulous red fall color)			Oct-Nov.	Pink-Red		
Variegated Weigela	4-6’	5’	May	Pink-red		
Spreading Yew						
*Azalea – ‘Karen’s’ – Resilient			May	Fuchsia -pink		
2 lilac – old fashioned white and purple						
Holly ‘Blue Princess’						
Dwarf European Spruce						
Variegated Pachysandra - evergreen				Green-ivory		
<u>Island 3: Pond island</u>						
Japanese Iris ‘Fortune’ (in water)						
Japanese Iris (Same mystery as rear fence bed)						
Variegated Japanese Iris (behind figure)						
Pikeral (in water)						
Yellow flag (in water)						
Carex (like a grass) – variegated ‘Ice dance’	1’	2’				
Carex (like a grass) – green						
Weeping Hemlock Tsuga canadensis ‘Pendula’	5’	5-10’		evergreen		
Coreopsis – ‘Moonbeam’				Pale yellow		
Coreopsis – ‘Zagreb’	15”	12-18”		Bright yellow	s	

Views:



Front
June Roses



Patio Arbor
(looking East)



Patio
Bonsai Garden



Back Yard
View from terrace



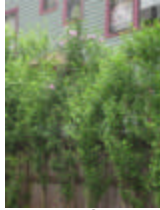
Back Yard
Pond



Back Yard
Brownstone wall and steps South



Norway Maple



Rose of Sharon
Pruned as hedge



Rose 'The Fairy'



English Hedge Maple



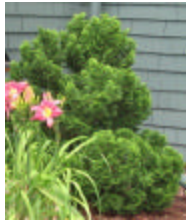
Pyramidal Yew
Japanese



[Ginkgo](#) with
White Hydrangea



Daylily
Chicago Royal Robe



Dwarf Hinokie
False Cypress



Rose (shrub)
Bonica



Foam Flower



Aster
(as ground cover)



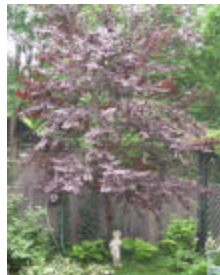
[Chanticleer Pear](#)
Flowering



Spruce
Dwarf Alberta Vine



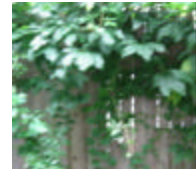
Sweet Autumn Clematis



[Thundercloud Plum](#)
European



[Hornbeam](#)



Virginia Creeper w weed



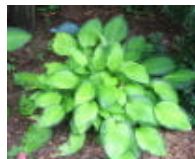
Hosta
'Sum and Substance'



Hosta
'Patriot'



Hosta
Golden Tiara



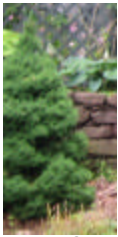
Hosta
'Gold Standard'



Hosta
'Great Expectations'



Coral Bells
'Plum Pudding'



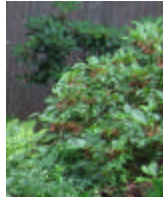
Dwarf Spruce European



Hydrangea 'Everlasting Summer'



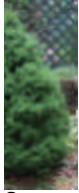
Tiarella



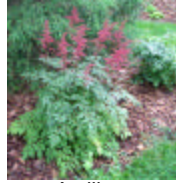
Rhododendron 'Scintillation'



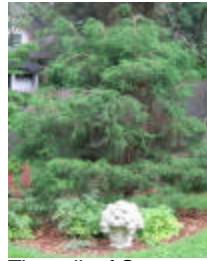
Beach, European 'Purple Rain'



Spruce Dwarf European



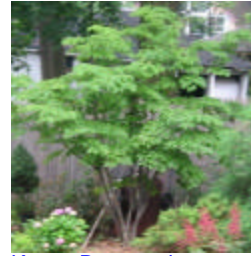
Astilbe 'Fanal'



Threadleaf Sawara False Cypress



Hydrangea 'Pink Diamond'



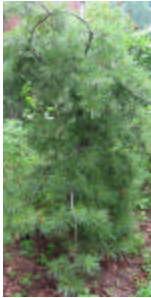
[Kousa Dogwood](#)



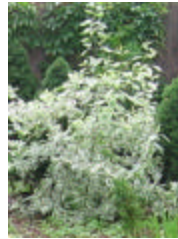
Azalea (unique) Lilac spiderflower ~Pukensee



European Larch



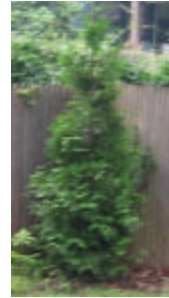
White Pine Weeping



[Dogwood Shrub](#) Variegated Red-stemmed



[Viburnum](#) Leatherleaf



Western Arborvitae



Japanese Iris Fortune & Variegated



Carex 'Ice Dance'



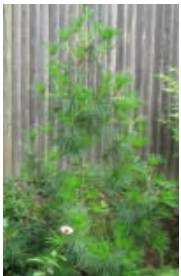
Weeping Hemlock



Coreopsis 'Zagreb'



Blackthorn Fernleaf



Umbrella Pine



White Dogwood 'Cherokee Princess'



Alaskan Cedar Weeping



Weigelia [Variegated](#)



Azalea ['Karen's'](#)



Holly 'Blue Princess'



Spreading Yew



Pachysandra Variegated